

Cushion colours

Our cushions are manufactured using Sunbrella®, a colourfast fabric that is made from a durable, all-weather, 100% solution-dyed Teflon® coated acrylic fibre. This fabric repels water, but cushions should not be left out in heavy rain for prolonged periods. If cushions do become saturated, place them on edge until dry.

All fabrics are available in Sunbrella® Standard and Sunbrella® Rain® fabric. Rain® fabric has an additional barrier that makes the fabric waterproof and the surface of the cushion quick drying. Please note that although the fabric is waterproof, zips and venting will allow ambient moisture from the atmosphere to enter the cushion. Please do not store cushions until dry. There is an additional charge for cushions in Sunbrella® Rain® fabric.

When ordering cushions, please suffix the fabric colour code to the cushion code. For stock colours outside the USA please see our current selection opposite. If the waterproof Sunbrella® Rain® option is required, please add a 'V' to the fabric code, e.g. Canvas Natural = **SJA-5404 V**.

In the **USA**, a much wider selection of Sunbrella® fabrics is available and we make all cushions to special order – please see the Sunbrella® website: www.sunbrella.com/en-us/. We price cushions by grade with different fill and welt options available. Customer's Own Material (C.O.M.) orders are welcome, please email your enquiry to: USsales@teak.com.

Please see page 234 for Barlow Tyrie care products and page 213 for cushion colours.

Sunbrella® features:

- The unique formula of Sunbrella® fabric together with their high production standards make the fabric easy to clean and fade resistant
- Please note that 'standard' stock colours may not apply to the USA stockists. Due to the vast choice available from Sunbrella® fabrics, we bespoke manufacture our cushions and pillows to order
- In the USA, selected Sunbrella® Rain® fabrics are available as an option
- In the USA, no specific legal requirement is necessary for fire retardant cushions for outdoor furniture
- Please note when ordering cushions in USA – the fabric name, colour and/or fabric code used are sometimes different:
.3705 Charcoal (Europe) and **5489** Canvas Coal (USA);
.5404 White Sand (Europe) and **5404** Canvas Natural (USA);
.5476 Pepper (Europe) and **5476** Canvas Heather Beige (USA).

Note: Sunbrella® Taupe cushion colour has two different codes, in the European Collection **3729** which is fire retardant and in the North America Collection **5461 V** is available as Rain® V77 fabric.



Not all fabrics may be available in the USA. Cushions are priced by grade with different fill and welt options available. Customer's Own Material (C.O.M.) orders are welcome, please email your enquiry to: USsales@teak.com.

Cushion fabrics and seat pads have a water repellent finish applied but are not waterproof and should not be left out in heavy rain. There is an additional charge for Sunbrella® Rain® barrier finish fabrics.

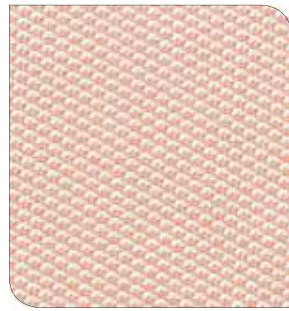




DUP-P030 Dupione Shade



DUP-8011 Dupione Sand



LOP-R023 Lopi Blush



NAT-10025 Natté Frosty Chiné



NAT-10059 Natté Dark Taupe



NAT-10064 Natté Carbon Sky



NAT-10065 Natté Carbon Biege



NAT-10152 Natté Graumel Chalk



SAV-J237 Savane Storm



SAV-J239 Savane Silver



SJA-3705 Charcoal



SJA-3728 Paris Red



SJA-3729 Taupe



SJA-3756 Lead Chiné



SJA-3778 Quadri Grey



SJA-3941 Adriatic Blue



SJA-3954 Confetti Red



SJA-3965 Blush



SJA-3966 Marble



SJA-3967 Mint



SJA-5404 Natural



SJA-5439 Navy



SJA-5453 Canvas



SJA-5476 Heather Beige



SJA-18007 Heritage Pumpkin

Disclaimer: Whilst great care has been taken to reproduce fabric and material colours as accurately as possible, it should be noted that due to the limitations of the litho-printing process, we cannot guarantee that the reproduction accurately represents true fabric textures and colours.

Please take this into consideration as colours illustrated should only be used as a guide. Some images may contain discontinued fabric colours and furniture ranges.









Are our fabrics waterproof?

Yes – we have cushions in Sunbrella® Rain® fabric that has an additional barrier finish, which makes the fabric waterproof and quick drying. The zips and vents are not waterproof but are protected from rain by a folded flap. Cushions should be placed with the flap down, as illustrated to the right.

Cushion covers are designed to provide maximum weather protection with comfort and breath-ability.

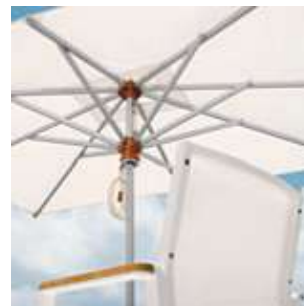
Optional waterproofing for your cushions

When ordering cushions, please suffix your fabric code to the cushion code. If the waterproof option is required, please add (V) to the fabric code, e.g. **SJA-5404-V** Canvas Natural. There is an additional charge for Rain® barrier finish fabrics. If you require help in choosing your cushions then please telephone or email your enquiry – please see our website for contact details.

How do I clean cushions?

One of the best ways to keep your cushions looking good and to minimise the need for deep or vigorous cleaning is to properly maintain the fabric. You can do this by brushing off dirt before it becomes embedded in the fabric and, wiping or spot cleaning spills as soon as they occur. A stain repellent may be applied to the fabric. A comprehensive guide to cleaning various spills is available on the Sunbrella® website.

After cleaning cushion and parasol fabric we recommend the use of 'Barlow Tyrie Fabric Weather Guard' (**4FWG**). It is easier to leave the cushion covers on during the cleaning process. Cushions that are cleaned before storage will be ready and waiting for the sun to shine. Please do not store cushions until fully dry.



Parasols & Pavilions


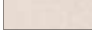

Both parasols and pavilions (roof, full curtains, and corner dressings) are manufactured from Sunbrella® canopy fabric, a durable, 100% solution-dyed acrylic. The colour is locked deep inside the yarn to give excellent resistance to the fading often caused by sunlight and cleaning. A stain repellent has been applied to the fabric to make the cleaning process easier.

Pavilions come with optional full fabric curtains, sheer panels, and zipped mesh curtains which carry an additional charge (standard supply is frame, roof, and corner dressings). Pavilions come in a choice of colour, but Parasols and the Sail Sunshade are available in **.302** 'Canvas colour' only. Our Sunshades are designed to have the strength to match their size, and are built with great attention to detail – see page 200.

Parasol, Sunshade and Pavilion fabric features:

- Our parasol 'Canvas colour' fabric is made from 100% solution-dyed acrylic yarn
- Both Napoli and Sail parasols and sunshade are available in the **.302** 'Canvas colour' only
- Special order canopies are available in the USA for most parasols other than Cantilever or Sunshade – please enquire at: **USSales@teak.com**

Pavilions are available in three Sunbrella® 'awning-weight' canopy fabric colours (see page 220):

-  **.1275** Stone
-  **.4642** Oyster
-  **.4781** Chocolate



A pavilion provides the ultimate, permanent shelter for a seating group or large dining area.

These pavilions are permanent structures of the highest quality and will last for years. The frame is made from heavy duty aluminium and the roof from Sunbrella® heavy duty fabric, which will not fade when exposed to strong sunlight.

Slings & Cord

Atom, Aura, Equinox, Horizon, Mercury, and Monterey

All slings are made either from Textilene®, a woven PVC-coated polyester yarn or Sunbrella® woven fabric, for extra luxury. Focusing on subtle patterns that read as textures, Sunbrella® sling allows you to achieve an elevated indoor aesthetic in an outdoor setting. These materials guarantee that our slings are strong, durable, mildew resistant, and require the minimum of maintenance. After rain, a light tap and any water simply drops off.

To keep your Sunbrella® fabrics and Textilene® slings in optimum condition we recommend using 'Woven & Sling Non-Foam Cleaner' (**4WTC**) – see page 235.

The Atom armchair seat is made from 'Denim' Sunbrella® sling fabric to create a clean line that is comfortable.

Our elegant Monterey armchair is built using quality materials and refined construction methods, combining a sculpted solid teak frame. The seat and back uses braided all-weather cord that's a woven blend of Olefin fibre (a key feature is its light fastness – see page 220) and all-weather Textilene®, making it rugged but with a soft hand. Monterey offers a choice of two cord colours: **.400** Brown or **.401** Chalk.

Please see page 234 for Barlow Tyrie care products and page 213 for cushion colours.

Slings & Cord features:

- Over two hundred feet of all-weather Textilene® cord is used for the dining Monterey armchair seat and backrest
- Sunbrella® fabric sling blends the strength of PVC with the softness of Sunbrella® acrylic yarn for added comfort
- Minimal care and maintenance
- Resistant to the outdoor environment



Sling fabrics – Textilene® and Sunbrella®

The Aura collection are available in 3 set colourways. When ordering from these collections, please add the correct colour suffix to the product code. Aura non-Modular and Modular seating comes in the standard frame + Textilene® sling colour.

The Equinox stainless steel extending dining table 360, is available powder coated/painted, in 2 colourways:

.01 Graphite powder coated frame and **.808** Dusk ceramic tabletop, with matching **.513** Carbon Sunbrella® fabric slings for dining side chair and armchair.

.02 Arctic White powder coated frame and **.806** Frost ceramic tabletop, with matching **.512** Seagull Sunbrella® fabric slings for dining side chair and armchair.

The Equinox or Mercury ‘powder coated/painted’ armchairs (and loungers) are available in both Carbon and Seagull Sunbrella® sling colours, which complement the tables.

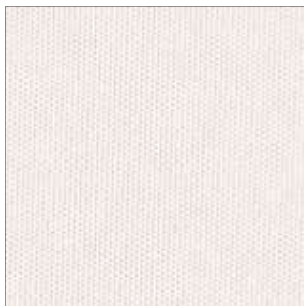
The Atom armchair uses Denim Sunbrella® sling fabric. This sling fabric blends the strength of PVC with the softness of Sunbrella® acrylic yarn for added comfort.

Parasol and Pavilion fabrics

Both parasols and pavilions are manufactured from Sunbrella® canopy fabrics, a durable, 100% solution-dyed acrylic. With the parasol fabric colour locked deep inside the yarn, it gives excellent resistance to the fading often caused by sunlight and cleaning.

Pavilion fabric colour codes are:

.1275 = Stone; **.4642** = Oyster; **.4781** = Chocolate



.302 Parasol Canvas Canopy Fabric



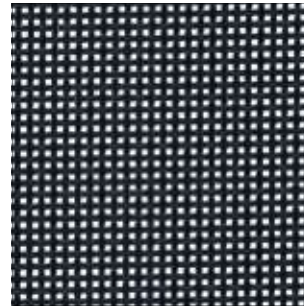
.1275 Pavilion Stone Canopy Fabric



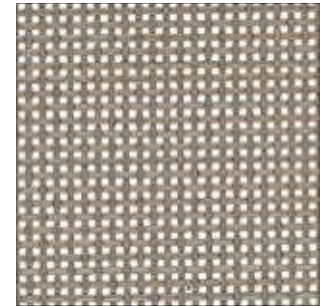
.4642 Pavilion Oyster Canopy Fabric



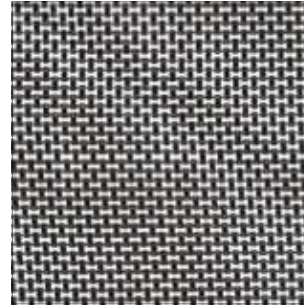
.4781 Pavilion Chocolate Canopy Fabric



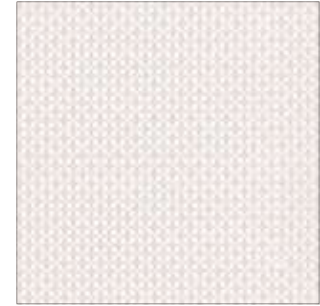
.500 Charcoal (sling)



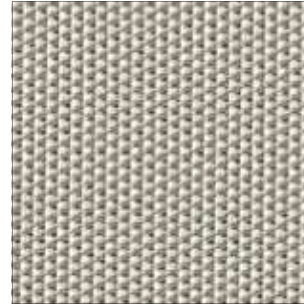
.502 Titanium (sling)



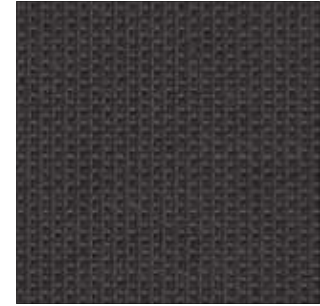
.504 Platinum (sling)



.505 Pearl (sling)



.512 Seagull (Equinox / Mercury sling only)



.513 Carbon (Equinox / Mercury sling only)



.514 Denim (Atom sling only)



.400 Brown (Textilene® Olefin fibre cord)



.401 Chalk (Textilene® Olefin fibre cord)



The Monterey collection has 2 colour combinations.

The dining armchair uses Textilene® / Olefin fibre cord: **.400** Brown or **.401** Chalk and for the Italian ceramic table top: **.805** Oxide or **.806** Frost.

Powder coated frames

Atom, Aura, Equinox, Layout, Mercury, Monterey and Titan

These products are powder coated to give a long period of maintenance free service with a stunning visual effect. We use an environmentally-friendly process to clean and etch the aluminium and stainless steel before applying a high quality oven-fired powder coating.

Equinox, Layout and Mercury offer powder coated dining side chairs, armchairs and settees, using a 'marine grade' stainless steel frame and seating in complimentary sling colours.

The Equinox extending dining table 360 features a **.01** Graphite powder coated frame with a **.808** Dusk ceramic top or a **.02** Arctic White frame with a **.806** Frost ceramic top.

Monterey tables have a **.02** Arctic White frame with a **.806** Frost ceramic top or a **.01** Graphite frame with a **.805** Oxide ceramic top.

Product care and maintenance

For powder coated finishes it is important that the finish is cleaned regularly using a solution of mild detergent in warm water to retain the aesthetic qualities and the expected long term durability.

Surfaces should be cleaned using a soft cloth, sponge or a natural bristle brush, avoiding abrasive materials that may damage the finish. The frequency of cleaning depends upon the environment in which the products are placed but as a general guide an annual clean will suffice in most urban environments. In areas of high pollution, such as marine and swimming pools, cleaning should be carried out on a more frequent basis.

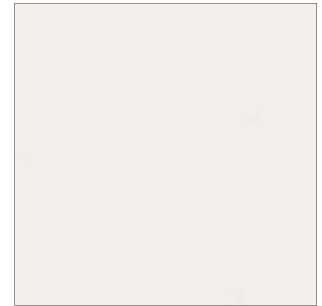
Aluminium and stainless steel products – Frame touch-up paint colours

- 7TUP.01** "Graphite" touch-up paint – 12ml.
- 7TUP.02** "Arctic White" touch-up paint – 12ml.
- 7TUP.04** "Champagne" touch-up paint – 12ml.
- 7TUP.08** "Black" Titan range touch-up paint – 12ml.
- 7TUP.14** "Forge Grey" Layout range touch-up paint – 12ml.

Localised damage to powder coated finishes can generally be successfully repaired. The exact techniques depend on the nature and extent of the damage. Powder-coat is a "dry" baked on finish, not a "wet" applied paint, therefore, our "wet" touch-up paints do not exactly match the original colour.



.01 Graphite (powder coated frame)



.02 Arctic White (powder coated frame)



.03 Grey (powder coated Parasol Bases)



.04 Champagne (powder coated frame)



.08 Black (powder coated Titan frame)



.14 Forge Grey (p/coated Layout frame)

Note: Aura collection are available in 3 colourways for Frame and Textilene® sling:

- .01.500** Graphite + Charcoal
- .02.505** Arctic White + Pearl
- .04.502** Champagne + Titanium

The Equinox dining side chair and armchair plus the Mercury armchair are available in 2 colourways: **.01** Graphite and **.02** Arctic White powder coated frame, with bespoke matching fabric slings.

The Titan products (below) are part of our Rustic Teak range of furniture – see page 134. The serving table features an insulated ice box for drinks, drawers, bottle racks and a removable table extension leaf.

The collection includes an extremely comfortable stacking armchair with shaped rustic teak back and seat on a black powder coated aluminium frame available in **.08** Black. Touch-up paints for our furniture collections are available, to repair any damage that might occur during its lifetime of domestic use.







Ceramic tabletops

We offer our ceramic tabletops in 'high-fired' ceramic that are ideal for outdoor use; scratch-proof, weather-resistant and attractive. All ceramics have a wipe clean surface with good colour stability.

The Monterey ceramic tabletops are available in "Oxide" and "Frost" and the Equinox ceramic tabletops, including our extending tables, use "Frost" and "Dusk".

Please note that we supply the Mercury serving table (**ZMES**) with a standard ceramic top in 'Nero Black' but we have a selection of optional ceramic tops (**ZMEST**) as follows: **.805** Oxide; **.806** Frost and **.808** Dusk.

Ceramic features:

- Ideal for outdoor use; scratch-proof, weather-resistant and long-lasting beauty
- Wipe clean surface and good colour stability
- A 'high-fired' Italian ceramic that is very functional

The aesthetic properties

The ceramic sheets we use are very large, which makes them ideal for a one-piece table top. In addition to being functional this 'high-fired' Italian ceramic has a lot of design detail.

How do I care for ceramic surfaces?

Ceramic resists scratching and is not harmed by organic and inorganic solvents, disinfectants, and detergents. It can be easily cleaned without affecting its surface characteristics. We recommend using no more than soapy water and a sponge to maintain the aesthetic and practical qualities of this exceptional material.

Innovation

The new ceramic are thicker single layer sheet with a fibreglass mesh backing, designed to ensure surface evenness. Often referred to as 'high-fired' due to the fact it is baked/fired in an electric kiln at an exceptionally high temperature (around 1220°C over 2000°F) to produce a porcelain product that has high surface strength. The scientific term is *Sintering*, the process of compacting and forming a solid mass of material by heat.

These fine sheets are then cut, profiled, and polished by hand to give a smooth soft edge. This Italian made ceramic makes our tabletops exceptionally resistant to breakage.

This product has many exceptional features, including;

- Non-porous, meaning it is naturally anti-bacterial and hygienic
- Does not require annual sealing unlike natural marble and granite
- Frost proof. Winter snows will not harm it
- Highly scratch, stain and UV resistant properties



What are the features claimed by Laminam ceramic?

Manufactured using advanced techniques, the sheets combine reduced thickness and large size with very high resistance to mechanical stresses, chemicals, wear, scratches, deep abrasion and bending, are easy to sanitise, resistant to frost, fire, mould and UV rays.

All the features and chromatic properties of the sheets are unalterable, and remain unchanged over time and in the presence of all kinds of weather conditions. A revolutionary material respectful of the environment: natural raw materials, sustainable technology, products entirely recyclable are the basis of Laminam’s green policy.

Reaction to fire means “degree of participation of a material in the development and propagation of fire to which it is subjected”; as regards this feature, materials like Laminam are assigned to European classes according to their increased degree of participation in combustion, in accordance with standard EN 13501.

The reaction to fire therefore assesses the higher or lower propensity a material has to participate in a fire. While the fire resistance, which is a property related to a system or a structure and not to a single material, is different. Laminam does not contain organic material therefore it is resistant to fire and high temperatures. In the event of fire it does not release smoke or toxic substances.



.805 Oxide (ceramic)



.806 Frost (ceramic)



.808 Dusk (ceramic)



Weave & Glass tabletops

Our woven ranges have all been designed for minimal care and maintenance, with the synthetic material hand-woven over a powder coated aluminium frame. The finished product is strong and highly resistant to the rigours of an outdoor environment.

Our furniture can be left out all year round. However, as part of a maintenance programme we recommend the use of 'Barlow Tyrie Woven & Sling Non-Foam Cleaner' (**AWTC**) to keep your furniture in optimum condition.

The Savannah tables have tempered glass tops, and the Mercury dining table tops are acid-etched tempered glass with a matt finish, both of which are easy to clean.

Please see page 234 for Barlow Tyrie care products and page 213 for cushion colours. Cushions are included with our deep seating furniture, so when ordering please suffix the fabric colour code to the product code. An optional seat pad or loose scatter cushions are available separately.

Weave & acid-etched tempered glass features:

- Minimal care and maintenance
- Strong and highly resistant to the outdoor environment
- Tables use 'natural clear' acid-etched tempered glass tops
- Toughened or tempered glass is a type of safety glass processed by controlled thermal or chemical treatments to increase its strength compared with normal glass



Savannah is a large range of woven products designed by the late, eminent, New York furniture designer Vladimir Kagan. The collection includes comfortable high backed chairs, settees, dining and occasional tables plus a matching lounge.

Classic styling and deep sweeping curves make this chair look just as good indoors as it does out. Hand woven from synthetic wicker ensures this chair is low maintenance and completely resistant to sun and rain, so you can leave it outdoors all year round.



Woven, Arizona – Java Flat weave



Woven, Savannah – Java Flat weave



Woven, Dune – Java Round weave



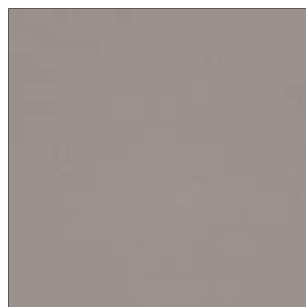
Woven, Dune – Straw Round weave



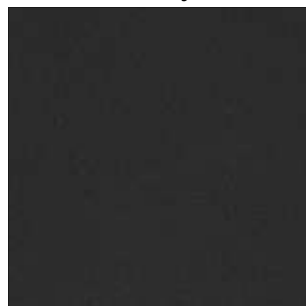
The Dune daybed and ottoman are woven products designed by the late, renowned New York furniture designer, Vladimir Kagan. The collection includes thick base cushions and 5 scatter cushions for luxury and comfort. The daybed and ottoman nest neatly together when not in use. All-weather solid core synthetic weave which is highly resistant to the environment with the minimum of maintenance. Cushions use Sunbrella® fabric, made from a durable, 100% solution-dyed acrylic fibre, with 5-year guarantee for residential use.



.604 Sea Ice (etched-glass)



.605 Platinum (etched-glass)



.606 Charcoal (etched-glass)







Plaques & Inscriptions

Our inscription service is available for most of our teak armchairs, benches, and seats. The inscription is normally placed on the top rail but could be on the rail under the chair seating or on a table top. This 3D-lettering is carved in a traditional serif typeface using a 'V'-cut, which allows the inscription to be read easily from the side as well as from immediately in front, which is an advantage over a standard 'straight-cut' letter.

As an alternative to carved inscriptions, we offer bronze plaques with lettering set in cream vitreous enamel. A choice of lettering and font styles is available. The finished plaque is then recessed into the face of the rail and held in position using a special hidden vandal-proof fitting.

Inscription service & bronze plaque features:

- 3D-lettering is carved in a traditional serif typeface
- We use a 'V'-cut inscription, that is easily read from the side and immediately in front
- We offer bronze plaques, unique and bespoke in design, and we can make these to length



5CA



Carved Inscription – Serif font

Note: Our carved inscription service may be used on most of our teak armchairs, benches and seats. We normally supply the inscription in capital letters using a 'Times New Roman' serif font at 2.5cm (1") in height. If more than one line of text is required we might need to reduce the height of text depending on the model of seat.

The maximum number of characters and length of an inscription will depend on the seat model, the length of the seat, the height of text, whether upper or lower case or the font used. Our Rothesay seat allows 3 rows of text whilst other seats can only accommodate up to 2 rows.

Times New Roman is our standard font but we are able to supply bespoke inscriptions in other fonts plus inscriptions in foreign language scripts such as Chinese or Arabic. We can supply teak panels in a seat back with a logo or a club crest, if suitable artwork is available – please inquire.

5BPS



Bronze Plaques

Note: Our bronze plaque service may be used with most of our seats and benches. We supply as standard a 57mm deep (approx. 2") bronze plaque with 6mm – (0.25") block letters, see detailed image opposite. However we can supply plaques to any size and lettering in any font – please inquire.

5BPL



Bronze Plaque Letters

Note: The engraved lettering is filled with vitreous cream enamel that is not affected by an outdoor environment. Alternative 'soft filling' offered by other suppliers often used on plaques sited inside a building, is totally unsuitable for use outdoors and should be avoided.

Our plaques are recessed to finish flush with the surface of the seat rail with a hidden fixing that leaves the visible face of the plaque clear and makes its unauthorised removal difficult.

Plaques allow you to be creative with your choice of font or an image as illustrated by the 'musical notes' plaque below.



Security fasteners

We have two types of security fastener to prevent the unauthorised movement of seats or other items in public areas.

We supply stainless steel fixing irons that must be cast into a concrete block to secure a seat.

We supply brass fixing brackets secure any item of furniture in place on a solid floor. These polished brass security fasteners are supplied with tamper-proof fixings for use on concrete, paving, and wood floors.

Security fasteners features:

- Stainless steel seat fixing irons – set of 2
- Anchors a bench or chair into the ground
- Brass security fasteners – set of 4
- Supplied with tamper-proof fixings



4FI

**Seat Fixing Irons (2 required – price each)****Length:** 24cm – 9" **Width:** 4cm – 1.5"**Weight:** 1kg – 2lbs

Note: Stainless steel seat security fasteners to prevent unauthorised movements of seats in public places. These fasteners must be cast into a concrete block.



4SF

Brass Security Fasteners (set of 4)**Width:** 5cm – 2" **Height:** 8cm – 3"**Weight:** 0.75kg – 1.5lbs

Note: A set of 4 polished brass security fasteners to prevent the unauthorised movement of seats or other items in public areas. Supplied with a tamper proof fixing for use on floors of concrete, paving or wood.



Care products

Teak furniture can be left out all year round. However, as part of a maintenance programme we recommend the use of Teak Cleaner each spring to prepare your furniture for the season.

If untreated, teak will weather to a soft silver grey patina. If you wish to slow the weathering process and retain the golden teak colour, apply Teak Colour Guard before the weathering process begins.

Although stainless steel products are made to withstand the rigours of an outdoor environment, regular care and maintenance is required to preserve the fine appearance of your furniture. We offer care products for all the furniture we supply, which are easy to use and very effective. An annual or twice-yearly maintenance regime will be more than adequate in most instances to maintain your furniture in prime condition; however in coastal and chlorinated environments we recommend rinsing your stainless steel furniture with fresh water.

For powder coated furniture we suggest you clean and maintain your furniture with Powder Coated Stainless Steel & Aluminium Cleaner. To keep your Sunbrella® furniture fabrics and Textilene® slings in optimum condition we recommend using Woven & Sling Non-Foam Cleaner.

We supply cleaning products with their own applicator pad.



Anti-Wasp Solution (not available in the USA)

Instructions for use:

1. Make sure the wood is 100% dry;
2. Apply a light coat of the Anti-Wasp solution with a clean, lint free cloth and allow to dry for 30 minutes;
3. Repeat the process and allow to dry for 1 hour before exposing to the sun or rain;
4. If necessary, repeat the treatment once or twice during the wasp season.



4WS





Powder Coated Stainless Steel & Aluminium Cleaner 4AC

Quantity: 1 litre **Note:** Powder Coated Stainless Steel & Aluminium Cleaner easily removes dirt and grease, oil, pollutants, and mould from the furniture. Supplied with its own special applicator pad.



Fabric Weather Guard 4FWG

Quantity: 1 litre **Note:** Fabric Weather Guard protects the fabric and slows down the aging effects of weathering. Supplied with its own special applicator pad.



Stainless Steel Clean and Guard 4SSCG

Quantity: 1 litre **Note:** Stainless Steel Clean & Guard cleans and leaves a fine layer of Teflon® on the surface to help prevent the build up of contaminants. Supplied with its own special applicator pad.



Teak Colour Guard 4TCG

Quantity: 1 litre **Note:** Teak Colour Guard helps maintain the golden brown colour of new teak. Supplied with its own special applicator pad.



Teak Cleaner 4TC

Quantity: 1 litre **Note:** Teak Cleaner cleans and restores discoloured, dark grey teak. Contains brightener ingredients which will restore your teak to its original colour. Supplied with its own special applicator pad.



Teak Oil 4TO

Quantity: 500ml **Note:** By choosing teak you have selected the finest, most durable material available for outdoor furniture. Teak Oil is the traditional method of retaining original colour of new teak. Ensure that the wood is completely dry before applying, brush or rag. Apply liberally and wipe off the excess with a rag.



Teak Stain Guard 4TSG

Quantity: 1 litre **Note:** Teak Stain Guard forms an invisible layer to protect your teak from everyday stains such as butter, oil, and red wine, making the cleaning of accidental spills an easy task. Supplied with its own special applicator pad.



Anti-Wasp Solution 4WS

Quantity: 1 litre **Note:** Anti-Wasp Solution is applied to outdoor furniture to deter wasps from defacing weathered wood.

Not available in the USA



Woven & Sling Non-Foam Cleaner 4WTC

Quantity: 1 litre **Note:** Woven & Sling Non-Foam Cleaner is a non-foam agent that maintains woven furniture and Textilene® slings and Sunbrella® fabrics without unsightly residue. Supplied with its own special applicator pad.



Frequently Asked Questions

Which materials do Barlow Tyrie use?

We combine the highest quality materials with superior craftsmanship and design to produce our furniture, resulting in a worldwide recognition for excellence. We have combined stainless steel with Textilene® or Sunbrella® slings and the highest grade teak with all-weather cord, which is woven from Olefin®. We powder-coat aluminium and stainless steel frames, and combine them with synthetic woven materials to produce contemporary furniture to our traditional high standard.

What is the Forest Stewardship Council® (FSC®)?

The Forest Stewardship Council® is an international, non-profit association whose members include environmental and social groups, and progressive forestry and timber-related companies, who are working together in order to improve forest management worldwide.

The trademark of the FSC® on a product indicates that the wood used to make it comes from a source that has been certified by the FSC® as being well managed and meeting the environmental, social and economic standards that have been set by the FSC®.

The FSC® certificate is only granted to organizations following an annual audit to confirm their compliance with FSC® standards. Our audit is performed by an FSC® accredited Certification Body, NEPCo and our Chain of Custody code is NC-COC-014404. Trademark licence code FSC-C007974.



Does Barlow Tyrie produce any FSC® certified furniture?

Yes. Please enquire on our selected number of items that are Forest Stewardship Council® (FSC®) certified (FSC® COC-007974) and available worldwide. Some products are not FSC® certified but are sourced from responsibly managed

forests, whilst sustaining eco-friendly practices.

What is the teak weathering process?

Over a period of time in an outdoor environment, untreated teak furniture which is exposed to the sun will patinate and turn a beautiful silver-grey colour. The length of time this takes will vary with climatic conditions (see previous page – our images to compare new teak to the weathered silvery-grey patina). Not only is it common for a teak bench, chair, or table to last 70 years standing out in the elements, it is also common to pass down such furniture to future generations as an heirloom.

Why do occasional cracks appear on my furniture?

Teak is a natural material and as such fine cracks in the end grain of components, e.g. legs and arms, may appear and then disappear with variations in the weather and the consequent change in the moisture content of the wood. Such fine cracks are normal, especially in heavier components, and will not affect the life or serviceability of your furniture.

Do I need to store my furniture during the winter?

No, Barlow Tyrie teak furniture can be left outdoors, uncovered, all year round. If you choose to cover your furniture outdoors during the winter you should use a material that allows the wood to breathe. Optional furniture covers and storage bags are available – see page 238.

TEAK

What are the properties of teak ?

Teak is a deciduous hardwood tree from managed plantations; it does not come from tropical rainforests. Teak has a naturally high oil content which makes it both stable and resistant to rotting when exposed to climatic extremes. For centuries these special qualities have made teak the preferred choice for marine decking and construction, hence it is considered the premium timber for outdoor furniture.

Teak wood will naturally weather from golden brown to a silver-grey patina colour. We recommend the following range of our Barlow Tyrie products to care for and maintain your Teak furniture. For additional information on this range, please see:

<https://www.teak.com/care>

- **Teak Cleaner (4TC)** – will quickly remove accumulated dirt.

If you live in the UK and wish to maintain your furniture using our care products, but do not wish to do the work yourself, then we recommend you contact www.andrewbanks.co.uk who can provide a regular or one-time service according to your needs.

- **Teak Colour Guard (4TCG)** – will maintain the golden brown colour of new teak by using UV inhibitors to prevent the natural greying process and pigment enhancers to help maintain the natural colour of teak.

- **Teak Stain Guard (4TSG)** – forms an invisible layer to protect your teak from everyday stains such as butter, oil, and red wine, making the cleaning of accidental spills an easy task.

Do I need to oil my teak furniture?

Treating with teak oil or other preservatives is not necessary; it will not extend the life of your furniture and is purely cosmetic. We do not recommend oiling your furniture.

Will the metal fittings on my furniture last as long as the teak?

We only use the best marine quality solid brass and stainless steel on our furniture. Neither of these will rust nor deteriorate with age.

Do I need to use a base if I am locating a parasol through a dining table?

Yes, all parasols must be located in the recommended parasol base for safety reasons. We supply our standard parasol base for use of a parasol through a dining table or a free-standing base is available for use without a table. Parasol plates are available for use with the Equinox and Bermuda pedestal tables.

Can we use any of your dining chairs with any of your standard-height tables?

Most of our dining chairs fit comfortably under most of our standard-height dining tables. However, there are exceptions, so if you wish to 'mix and match' please check the item specifications on our website or discuss your requirements with your stockist.



For additional information, please see:
<https://www.teak.com>

STAINLESS STEEL

What are the properties of stainless steel?

We manufacture our stainless steel furniture using 316 grade stainless steel, commonly known as 'marine grade'. You will need a regular cleaning regime to keep your stainless steel furniture looking its best with more regular maintenance in harsh environments that include a concentration of salt or chlorine found in coastal areas or around a swimming pool. We have added selected products to our range with an attractive powder coated finish over 316 'marine grade' stainless steel that gives a supreme ability to withstand the harshest marine environment.

If you have any questions or concerns about how 316 grade is affected or best suited for your area, please contact our customer services or email: info@teak.com.

We recommend that you wash on a regular basis with clean fresh water to remove the condensed chlorinated moisture droplets and use the following Barlow Tyrie product to care for and maintain your stainless steel furniture. Conventional abrasive cleaners or strong acidic cleaners should never be used on stainless steel as this can cause permanent damage to the finish and the metal itself.

By maintaining a regular cleaning program of all the vulnerable surfaces, the quality of the stainless steel finish can be maintained for many years.

- **Stainless Steel Clean & Guard (4SSCG)** – cleans stainless steel and leaves a fine layer of Teflon® on the surface to help prevent the build-up of contaminants.

ALUMINIUM

What are the properties of aluminium?

Aluminium is lightweight, which is why we have chosen to include it in our range. The aluminium we use is 'virgin aluminium', meaning it is not reclaimed from scrap and so is stronger and longer lasting. We powder-coat the aluminium to prevent oxidation and ensure it gives long service. We recommend the following Barlow Tyrie product to care for and maintain your aluminium furniture.

- **Powder Coated Stainless Steel & Aluminium Cleaner (4AC)** – easily removes dirt, grease, oil, pollutants, and mould.

WOVEN

What are the properties of synthetic weave?

Our synthetic material is colour fast, exceptionally strong, completely resistant to sun and rain, and requires minimal maintenance. We recommend the following Barlow Tyrie product to care for and maintain your woven furniture.

- **Woven & Sling Non-Foam Cleaner (4WTC)** – easy to use non-foam cleaner that maintains woven furniture and Textilene® slings without unsightly residue.

WARRANTY

Materials and products have varying periods of warranty and guarantee for residential use that excludes damage due to misuse. For further details please see our website.

Please see page 234 for Barlow Tyrie Care Products, and usage advice.

Please note when moving furniture and for delivery that some large items are very heavy. Our delivery is a trade service to the vehicle tailgate only and you will be responsible for arranging personnel to carry and position the furniture. If delivery is to a private address, prior to delivery you must assess the access for sufficient width, height, and manoeuvre room for a commercial furniture lorry, and advise the stockist if it is unsuitable. We will, of course, try to accommodate the wishes of our customers.

Please make sure when ordering that you add the correct suffix to the product code. The suffix denotes: Frame colour + Sling colour + ceramic Tabletop colour, etc. By correctly adding the code suffix we can process your order without delay.

e.g. Product reference code for an Aura Armchair = **1AUA.01.500**

Product code [**1AUA**] + Graphite frame [**.01**] + Charcoal sling [**.500**].



Furniture covers & Storage bags

Our furniture covers are made using WeatherMAX-LT®, a modified highly UV-resistant polyester fabric offering superior strength and durability with long-term colour retention. This fabric is the industry's most balanced and cost-effective fabric available for outdoor applications requiring high water repellency and excellent breathability; the perfect choice for outdoor furniture covers where lightness and ease of storage offer an advantage.

These lightweight, one-way breathable covers allow trapped moisture to disperse, but prevent rain and dust from penetrating. A unique fastening ensures a secure fit. The life and good looks of the cover depend a great deal on the way it is used and how it is cared for. The covers are easy to put on and remove, and can be stored in their own pouch when not required.

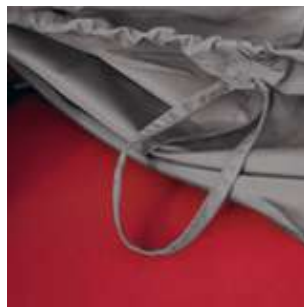
Helpful hints

If the furniture has any sharp corners or edges, place foam rubber on the sharp edge to reduce risk of puncture or abrasion of the covers. For table and chair combinations, placing an object, such as a beach ball, under the centre of the cover can help with water drainage. When covering the Dune day bed and ottoman please ensure that the ottoman and cushion are placed on top of the base cushion before covering.

Note: Covers for standard dining groups are designed to cover the furniture with the chairs not under the table. Please allow 4 to 6 weeks for delivery.

Furniture covers features:

- WeatherMAX-LT®, a modified highly UV-resistant polyester fabric
- Lightweight, one-way breathable covers allow trapped moisture to disperse
- Unique fastening ensures a secure fit



Furniture covers & Storage bags

WeatherMax® Covers & Storage Bags

Covers for Apex:

400768 Apex Extending Dining Table 390 Rectangular (open) – 2APX39 table fully open with 14 Armchairs

Covers for Arizona:

400101 Arizona Armchair DS – 601361
400102 Arizona 2-Seater DS – 601364 + 601365 combination
400103 Arizona 3-Seater DS – 601364 + 601367 + 601365 combination
400104 Arizona Ottoman 104 Square DS – 601360
400118 Arizona Side Table 47 Square – 601662
400130 Arizona Low Table 75 – 601660 + Ottoman 601362, 1EQDO
400147 Arizona Low Table 120 Rectangular – 601661

Covers for Aura:

400106 Aura Modular Armchair DS – 1AUDMA
400105 Aura Modular Ottoman DS – 1AUDMO
400107 Aura Modular 2-Seater Settee DS – 1AUDM2
400108 Aura Modular 3-Seater Settee DS – 1AUDM3
400902 Aura Armchair 2 stacked – 1AUA
400901 Aura Armchair 4 stacked – 1AUA
400915 Aura Adjustable Height Table 140 Rectangular – 2AULA14
400916 Aura Counter Height Dining Table 140 Rectangular – 2AUM14
400917 Aura HD Table 140 Rectangular – 2AUH14, 2AUATH14
400909 Aura HD Table 140 Rectangular and 4 Chairs – 2AUH14 + 1AUHC (x4)
400910 Aura Counter Height Dining Table 140 and 4 Chairs – 2AUM14 + 1AUHC (x4)
400918 Aura Counter Height Dining Table 200 Rectangular – 2AUM20
400919 Aura HD Table 200 Rectangular – 2AUH20, 2AUATH20
400920 Aura Narrow Dining Table 140 Rectangular – 2AUN14, 2AUATN14

Covers for Chesapeake:

400921 Chesapeake Ottoman DS – 1CPDO
400923 Chesapeake 3-Seater Settee DS – 1CPD3
400922 Chesapeake Armchair DS – 1CPDA

Cover for Dune:

400700 Dune Day Bed and Ottoman – 602700, 602750

Covers for Equinox:

400905 Equinox Armchair 4 stacked – 1EQA, 1EQPA
400906 Equinox Armchair 2 stacked – 1EQA, 1EQPA
400907 Equinox Side Chair 4 stacked – 1EQ, 1EQP
400908 Equinox Side Chair 2 stacked – 1EQ, 1EQP
400775 Equinox Extending Dining Table 360 (open) – 2EQX36 table fully open without chairs
400777 Equinox Extending Dining Table 360 (closed) – 2EQX36 table closed without chairs

Covers for Horizon:

400912 Horizon Armchair 2 stacked – 1HOAS
400914 Horizon Armchair 4 stacked – 1HOAS

Covers for Linear:

410901 Linear Armchair DS – 1LIDA
410902 Linear 2-Seater Settee DS – 1LID2
410903 Linear 3-Seater Settee DS – 1LID3
410904 Linear Low Table 76 Square – 2LIL07
410905 Linear Side Table 76 Square – 2LIS07
410906 Linear Low Table 120 Rectangular – 2LIL12
410907 Linear Low Table 150 Rectangular – 2LIL15
410908 Linear Ottoman DS – 1LIDO

Covers for Mercury:

400903 Mercury Armchair 4 stacked – 1MEA, 1MEPA
400904 Mercury Armchair 2 stacked – 1MEA, 1MEPA
410801 Mercury Armchair DS – 1MEDAC
410802 Mercury 2-Seater Settee DS – 1MEDL + 1MEDR + 1MEDB2 combination
410803 Mercury 3-Seater Settee DS – 1MEDL + 1MEDM + 1MEDR combination
410804 Mercury Ottoman DS – 1MEDO
410805 Mercury Centre Module DS – 1MEDC
410806 Mercury Low Table Square 76 – 2MEL07

Covers for Monterey:

400110 Monterey 3-Seater Settee DS – 1MTD3
400111 Monterey Armchair DS – 1MTDA

Covers for Titan:

400212 Titan Armchair 2 stacked – 1TIA.08
400213 Titan Armchair 3 stacked – 1TIA.08
400214 Titan Armchair 4 stacked – 1TIA.08
400769 Titan Dining Table 240 Rectangular – 2TI24 table only with no chairs

Covers for Other furniture:

400721 Highback Armchair DS – 1ADA, 1HADA, 1MIA, 603351
400722 Highback 2-Seater Settee DS – 603352
400723 Highback 3-Seater Settee DS – 603353
400741 Standard Height Armchair DS – 1EQDA only
400742 Standard Height 2-Seater Settee DS – 1EQD2, 1HADML + 1HADMR
400743 Standard Height 3-Seater Settee DS – 1EQD3, 1HADML + 1HADMM + 1HADMR
400731 Sun Lounger – Large – 1MOL, 603470, 1AUL (up to 3), 1EQPL (up to 2) & 1QUL (up to 4)
400733 Sun Lounger – Standard – 1AUL, 1CAB, 1CAS, 1CAU, 1CYL, 1EQPL (up to 2), 1HOL, 1QUL (up to 2)
400750 Pedestal Table 70 Square – 2EQ07, 2EQP07
400751 90cm to 120cm Dining Table and 4 Chairs – 2AR09, 2AU09 2BA13, 2CPC12, 2EQ09, 2EQ10, 2EQC10, 2MEC12, 2QU10, 603522
400752 100cm Circular HD Table and 4 Chairs – 2BECH09, 2EQCH10
400753 150cm Circular Dining Table and 6 Chairs – 2EQC15, 2EQC15S, 2EQC15, 2HOC15, 2WIC15, 603524, 606524, 606534

- 400754** 180cm Circular Dining Table and 8 Chairs – 2EQ18, 2HOC18, 603324, 2DR18, 2EQC18, 2EQC185
- 400765** 150cm Rectangular Dining Table and 6 Chairs – 2AT15, 2AU15, 2ME15T, 2MO15, 2WI15, 2EQ15, 2EQX23 (closed)
- 400766** 200cm Rectangular Dining Table and 6-8 Chairs – 2AR18, 2ARX28 (closed), 2AU20, 2CP20, 2EQ20, 2EQ22, 2ME22, 2QU20, 603565
- 400767** 320cm Rectangular Dining Table and 8-10 Chairs – 2CP28, 2STX32 (closed)
- 400771** 300cm Rectangular Dining Table – 2AU30, 2EQ30, 2MT30, 2TI30 – tables only with no chairs
- 400781** 100cm Circular Conversation Table – 2EQCC10, 2HACC10, 602650, 602660
- 400782** 100cm Square Conversation Table – 2EQSC10, 2HASC10
- 400783** Small Coffee Table 100 Rectangular – 2EQL10, 2MOL, 2MOL10, 603650
- 400784** Large Coffee Table 120 Rectangular – 2CPL12, 603651
- 400770** Serving Table or Trolley – 2AUS, 2EQS, 2MES, 2MIS, 2TIS
- 400773** Large Storage Chest – 3SC15
- 400774** Reims Refreshment Chest – 3RE

Storage Bags for Cushions:

(WeatherMax® with zipped fasteners)

- 400810** Cushion Storage Bag fits 2 Standard/Ultra Lounger Cushions
- 400824** Cushion Storage Bag fits 4 Armchair/Dining Cushions
- 400828** Cushion Storage Bag fits 8 Armchair/Dining Cushions



© Copyright Barlow Tyrie Limited

All copyrights are owned by Barlow Tyrie Limited; any infringement of our copyright by any party will be actively pursued.

The Barlow Tyrie logo and elephant design are Registered Trade Marks of Barlow Tyrie Ltd.

Whilst great care is taken to reproduce the fabric colours as accurately as possible, it should be noted that due to the

limitations of the printing process, the colours illustrated should only be used as a guide. Some images may contain discontinued furniture and please note that unless stated, scatter cushions and accessories are not included with products.

Barlow Tyrie Limited reserves the right to alter specifications without notice. See website for current product dimensions (plus or minus 3mm or 1/8") and weights are approximate.

This publication has been designed and produced in-house by Barlow Tyrie Ltd.

Photography: The Photographic Workshop (TPW)
Prepress: Zebra
Print: Armstrong.INK



Available worldwide

Barlow Tyrie Ltd

Braintree, Essex CM7 2RN, England

Tel: + 44 (0)1376 557 600

Fax: + 44 (0)870 460 1100

Email: UKsales@teak.com

www.teak.com

Barlow Tyrie Inc

1263 Glen Avenue, Suite 230

Moorestown, NJ 08057 – 8101, USA

Tel: + 1 856 273 7878

Fax: + 1 856 273 9199

Email: USsales@teak.com



BarlowTyrie